



# VERTICAL ROLLER MILLS

## **CEMTEC – your partner for success.**

CEMTEC operates on the basis of individual responsibility. Every member of our team has the right to make high-level decisions. The entire responsibility for a project – from planning to commissioning – rests with a single person. This means that you have the same, competent contact partner for all your queries, wishes and suggestions, without exception. In addition to standard orders, your individual requirements are also fulfilled rapidly and without complications.



**CEMTEC HEADQUARTERS IN ENNS AUSTRIA**

## **CEMTEC manages projects throughout the world for the cement and processing industry.**

CEMTEC manages every project from start to finish. From planning to commissioning. Our product spectrum includes tube mills for grinding a wide range of bulk materials and minerals, as well as rotating drums for thermal treatment (calcination, drying, cooling) and mechanical processing (mixing, washing, conditioning, etc.) of different bulk materials. We also offer erection supervision, commissioning and technical support. Successful projects all over the world attest to the competence of CEMTEC.

# VERTICAL ROLLER MILLS



## **CEMTEC vertical roller mills for every requirement.**

The CEMTEC vertical roller mill is a completely new and innovative design and a further step to more efficient grinding of soft and medium-hard products. The basic concept is based on a combination of the lower section of the mill featuring the roller and its supports, the grinding table and drive system, together with a series of highly efficient classifiers. Depending on the different product requirements the mill can be equipped with different types of separators. For fine grinding the separator type CTM is used, for coarse grinding the separator type CTC.

The mill combines established technical features with a new innovative support and drive system. This innovative support and drive system incorporates a bearing cartridge with slide shoe bearings and a standard bevel gear box with an electric motor. As a result of this system the forces generated by the grinding action are retained within the vertical roller mill structure and not conducted to the foundations. This makes civil engineering works less expensive.

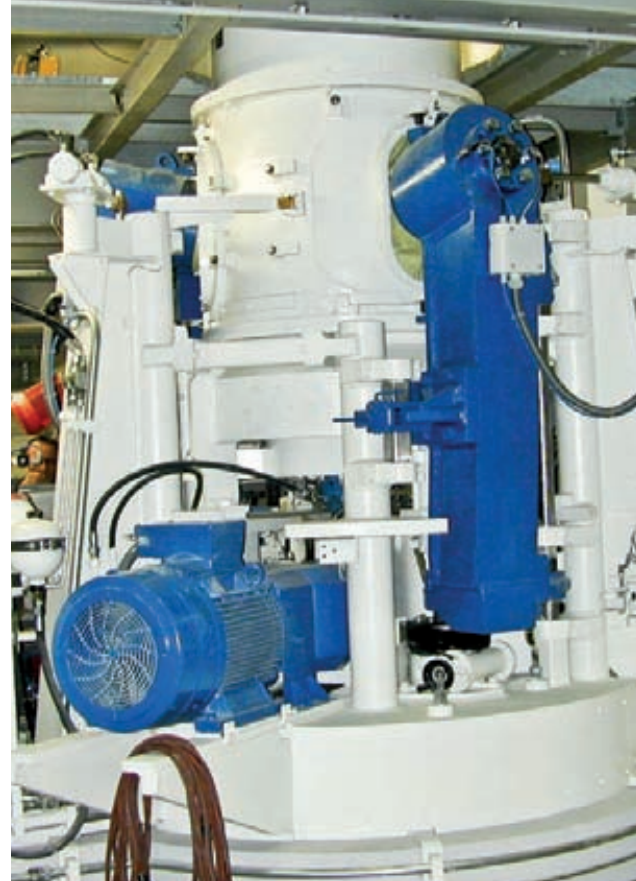
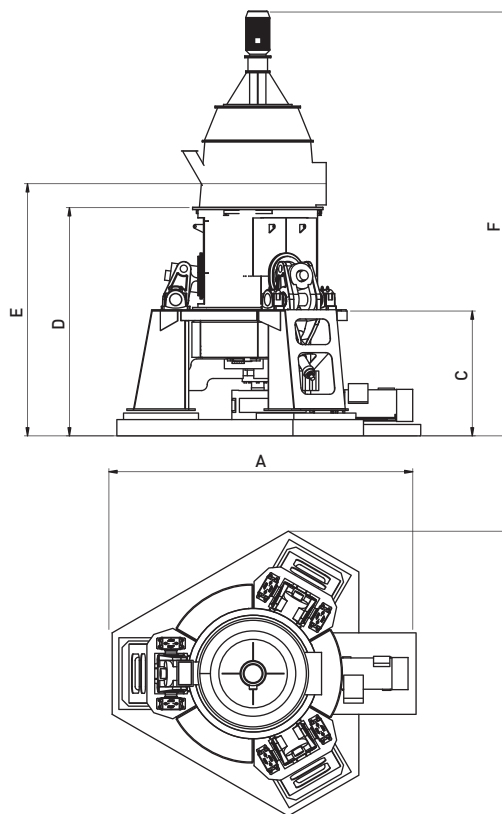
In order to design its vertical roller mills to product specifications, CEMTEC performs in-house laboratory tests to ensure proper process design of its equipment.



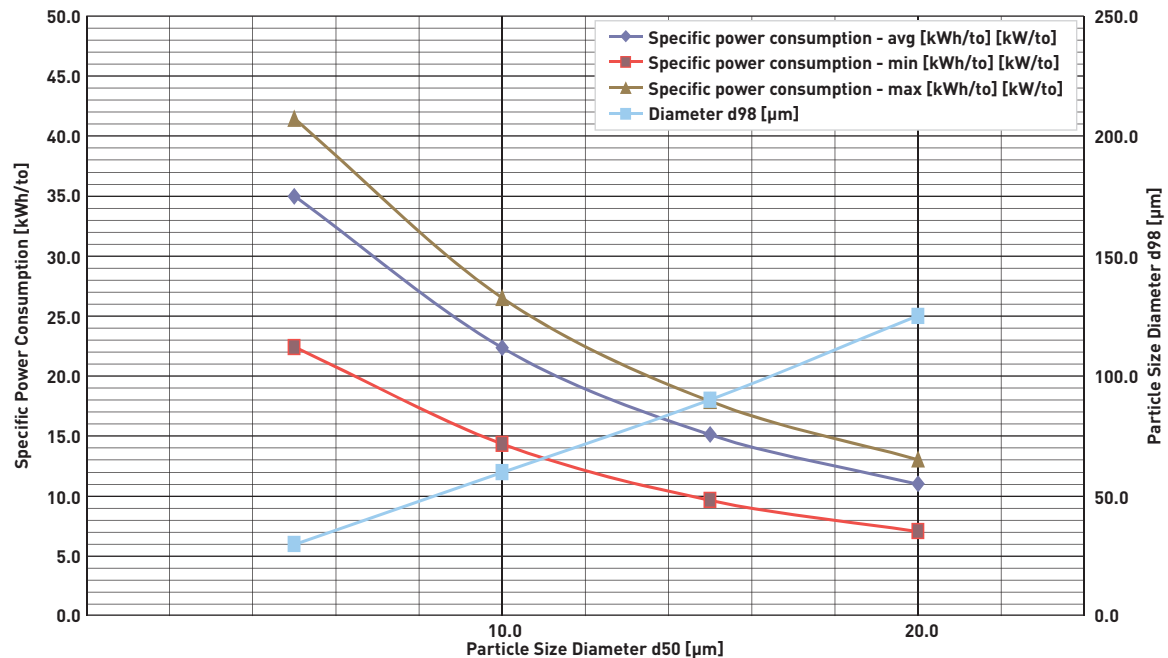
## STANDARD SIZES AND DIMENSIONS

VRM - M FOR FINENESS RANGE FROM d50 = 5 µm TO 20 µm								DIMENSIONS [mm]					
MILL TYPE	TABLE DIAMETER [mm]	ROLLER DIAMETER [mm]	NUMBER OF ROLLERS	INSTALLED MOTOR POWER [kW]	SEPARATOR AIR FLOW [m³/h]		WEIGHT [to]	A	B	C	D	E	F
VRM 6-M	670	450	3	37 - 55	4,200	6,600	7.6	2,500	2,300	1,000	1,850	2,000	3,400
VRM 8-M	800	570	3	55 - 110	6,600	10,800	10.2	2,900	2,700	1,200	2,150	2,380	4,000
VRM 10-M	1,000	710	3	110	10,800	15,000	19.4	3,600	3,400	1,500	2,700	3,000	5,000
VRM 12-M	1,200	850	3	132	15,000	24,000	27.5	4,300	4,100	1,800	3,300	3,600	6,000
VRM 14-M	1,400	1,080	3	200	24,000	32,400	35.0	5,050	4,700	2,100	3,800	4,200	7,000
VRM 16-M	1,600	1,150	3	315	32,400	40,800	49.6	5,750	5,400	2,400	4,300	4,800	8,000
VRM 20-M	2,000	1,300	3	355	40,800	54,000	88.9	7,200	6,700	3,000	5,400	5,950	10,000

## TYPE M

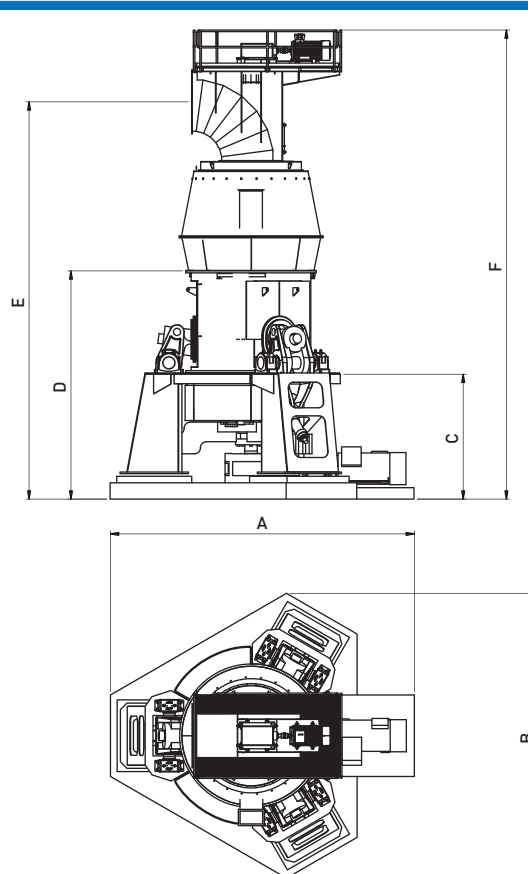


## VERTICAL ROLLER MILL – TYPE M



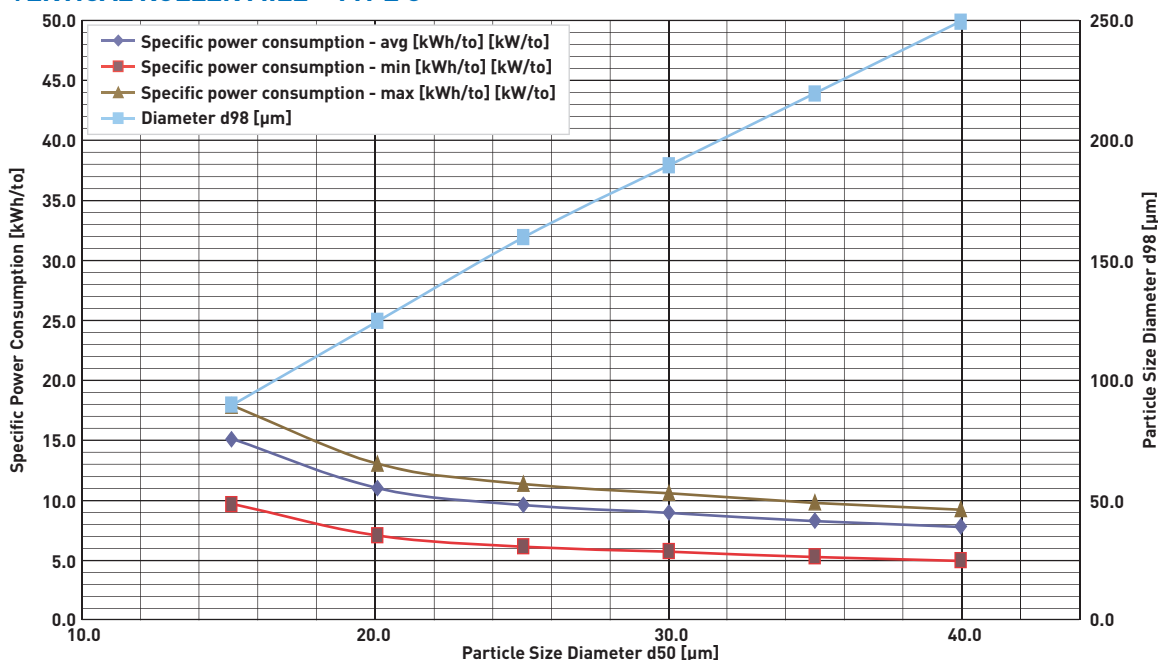
## STANDARD SIZES AND DIMENSIONS

VRM - C FOR FINENESS RANGE FROM d50 = 15 µm									DIMENSIONS [mm]					
MILL TYPE	TABLE DIAMETER [mm]	ROLLER DIAMETER [mm]	NUMBER OF ROLLERS	INSTALLED MOTOR POWER [kW]	SEPARATOR AIR FLOW			WEIGHT [to]	A	B	C	D	E	F
					[m³/h]									
VRM 10-C	1,000	710	3	150	19,000	30,000		20.2	3,600	3,400	1,500	2,700	4,700	5,600
VRM 12-C	1,200	850	3	250	30,000	45,000		28.6	4,300	4,100	1,800	3,300	5,650	6,700
VRM 14-C	1,400	1,080	3	315	45,000	75,000		36.5	5,050	4,700	2,100	3,800	6,600	7,800
VRM 16-C	1,600	1,150	3	400	45,000	75,000	90,000	51.7	5,750	5,400	2,400	4,300	7,500	8,900
VRM 20-C	2,000	1,300	3	630	75,000	90,000	110,000	92.6	7,200	6,700	3,000	5,400	9,400	11,200
VRM 22-C	2,200	1,450	3	700	90,000	110,000	140,000	131.4	7,900	7,400	3,250	6,000	10,300	12,200
VRM 26-C	2,600	1,680	3	1,000	110,000	140,000	185,000	206.3	9,350	8,750	3,830	7,000	12,200	14,400



TYPE C

## VERTICAL ROLLER MILL – TYPE C



# CEMTEC & MINING TECHNOLOGY WORLDWIDE

www.cemtec.at



EACH PROJECT STARTS  
IN OUR **LABORATORY!**

**CEMTEC**  
Cement & Mining Technology

## HEADQUARTERS

**CEMTEC Cement and Mining Technology GmbH**

Ennshafenstraße 40

4470 Enns

Austria

+43/7223/83620-0

+43/7223/83620-333

info@cemtec.at